

# Industrial Gas Regulators

MODEL NO.	PRODUCT NAME
49-OX	DOUBLE STAGE DOUBLE GAUGES O2 REG IP : 200 BAR OP : 10 BAR FLOW 60NM3/HR
100-D-OX	SINGLE STAGE DOUBLE GAUGES O2 REG. IP: 200 BAR OP: 8 BAR FLOW 55 NM3/HR
HOX-230	DOUBLE STAGE DOUBLE GAUGES DURABLE SERIES SS DIAPHRAGM O2 REG IP: 230 BAR OP: 12 BAR FLOW 70 NM3/HR
HOX-12	SINGLE STAGE DOUBLE GAUGES HIGH FLOW O2 REG IP: 200 BAR OP: 14 BAR FLOW 85 NM3/HR
49-N2	DOUBLE STAGE DOUBLE GAUGES N2 REG IP: 200 BAR OP: 10 BAR FLOW 55 NM3/HR
DU-N2	DOUBLE STAGE DOUBLE GAUGES DURABLE SERIES SS DIAPHRAGM N2 REG IP: 230 BAR OP: 12 BAR FLOW 60 NM3/HR
100-D-N2	SINGLE STAGE DOUBLE GAUGES N2 REG IP: 200 BAR OP: 8 BAR FLOW 50 NM3/HR
49-H2	DOUBLE STAGE DOUBLE GAUGES H2 REG IP: 200 BAR OP: 8 BAR FLOW 55 NM3/HR
DU-H2	DOUBLE STAGE DOUBLE GAUGES DURABLE SERIES SS DIAPHRAGM H2 REG IP: 230 BAR OP: 12 BAR FLOW 70 NM3/HR
100-D-H2	SINGLE STAGE DOUBLE GAUGES H2 REG IP: 200 BAR OP: 8 BAR FLOW 50 NM3/HR
49-HL	DOUBLE STAGE DOUBLE GAUGES HELIUM REG IP: 200 BAR OP: 8 BAR FLOW 55 NM3/HR
DU-HL	DOUBLE STAGE DOUBLE GAUGES DURABLE SERIES SS DIAPHRAGM HELIUM REG IP: 230 BAR OP: 12 BAR FLOW 60 NM3/HR
100-D-HL	SINGLE STAGE DOUBLE GAUGES HELIUM REG IP: 200 BAR OP: 8 BAR FLOW 50 NM3/HR
49-CO2	DOUBLE STAGE DOUBLE GAUGES CO2 REG IP: 200 BAR OP: 10 BAR FLOW 8 NM3/HR
DU-CO2	DOUBLE STAGE DOUBLE GAUGES DURABLE SERIES SS DIAPHRAGM CO2 REG IP: 200 BAR OP: 10 BAR FLOW 10 NM3/HR
49-AR	DOUBLE STAGE DOUBLE GAUGES ARGON REG IP: 200 BAR OP: 10 BAR FLOW 40 NM3/HR
DU-AR	DOUBLE STAGE DOUBLE GAUGES DURABLE SERIES SS DIAPHRAGM ARGON REG IP: 200 BAR OP: 10 BAR FLOW 60 NM3/HR
49-AC	DOUBLE STAGE DOUBLE GAUGES ACYTELENE REG IP: 25 BAR OP: 1 BAR FLOW 15 NM3/HR
29-L	SINGLE STAGE LPG REG IP : 17 BAR OP : 14 BAR CYLINDER MOUNTED
29-LW	SINGLE STAGE SINGLE GAUGE LPG REG IP : 17 BAR OP : 14 BAR CYLINDER MOUNTED
120-D-LPG	SINGLE STAGE DOUBLE GAUGE HIGH FLOW LPG REG IP : 25 BAR OP : 1.5 BAR FLOW 2.5 NM3/HR INLET SIZE 1/2" LH OUTLET SIZE 3/8" BSPM

120-D-LPG



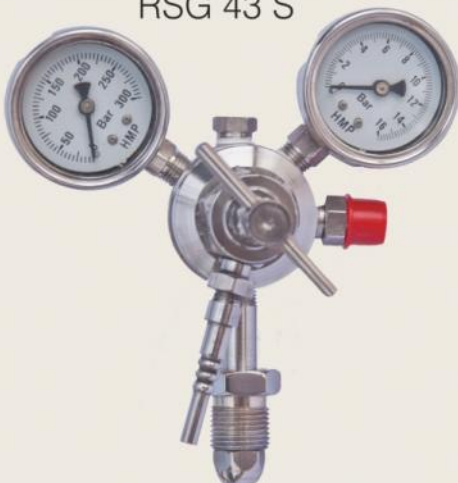
120-DB-LPG



29-LW-LPG



RSG 43 S



49 N

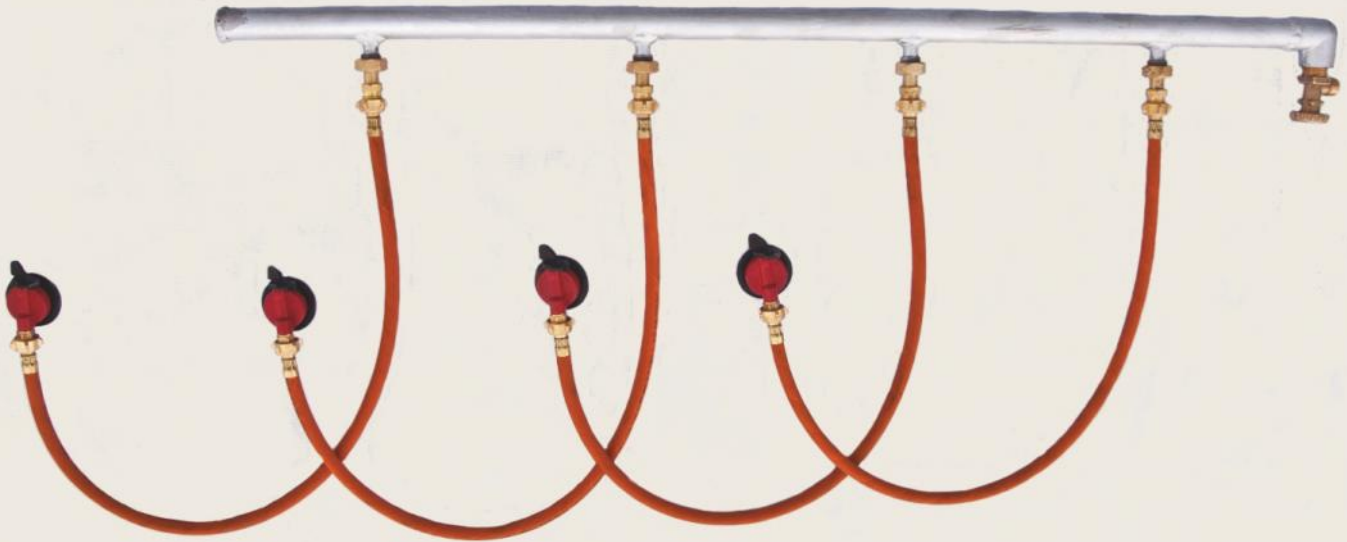


## Manifolds

For LPG in VOT Systems

Part No. 1171 to 1177

Suitable for any number of S.C.V. type cylinders to be used at a time. Centre distance between the consecutive lugs is 350mm (14") or 425mm (17"), 2x2, 3x3, 4x4, 5x5, 6x6, 7x7, 8x8 etc. Also manufactured as per customers requirement. As depicted below :



### Two Branch Connectors

12" Straight / 18" Bent

Part No. 1180 / 1181

Manufactured for connecting two manifolds or two pipelines as per customer's specifications or readily available in 12" straight or 18" bent.



### Multi Lock Bearing Adapter

Part No. 1186 / 1187 / 1188

These die-cast multi-point adapters enable the connection of the cylinders fitted with self-closing valves to a high pressure system through a standard M.E.C.V. thread with unreduced pressure and a high flow rate. The adapters are fitted with a non return valve to ensure that there is no return flow of LPG whilst cylinders are being disconnected. The salient features of these adapters is the multi-point locking mechanism which combined with a face seal ensures that the adapter will not leak even if it is loaded off axis. The quick disconnecting arrangement coupled with a safety interlock ensures that the device can only be disconnected after turning off the gas flow. Both adapters featured above are available in 22 mm and 25.6 mm seats, and  $\frac{3}{8}$ " or MECV outlet size.



### Flexible Cylinder Pigtails

Part No. 1220 to 1225

Available in size length of 2ft, 3ft and 5ft, or as per customer's requirement.

Used in cylinder connection to get more flexibility between steady manifold and cylinder.

This pigtail is specially used in Railway Pantry Car, Mobile Canteen Van, etc.

Also available with one side 3/8" BSPFF and other side FECV, Alfa Gamma make pigtails for all industrial Gases in similar end fittings.

These pigtails are available in SS Braiding, Sunaksha, SAE100R11, Alpha Gamma Hose.

All these pigtails are available with brass end fittings with brass crimping or MS fittings with MS hydraulic crimping.

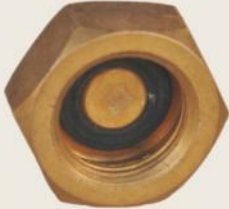
Non return valve  
Part No. 1182



Union Pin Set With Nut  
Part No. 1184, 1185



Dead Nut for LPG manifold



Manifold Lug  
Part No. 1183



Part No. 1280

## Manifold Fittings for LPG

Part No. 1182 to 1185

- Manifold Lug / MECV MS Adopter
- Union Pin Set With Nut
- Non return valve for VOT manifold
- M.S. Adopter  $\frac{3}{8}$ " B.S.P.P.M. X Bull nose for FECV Nut. Available for  $\frac{1}{2}$ " and 1" pipelines
- Bung: Manifold bung for F valve fitting size  $\frac{3}{4}$ " B.S.P.T.M or  $\frac{1}{2}$ " B.S.P.T.M.



## Q.T. Combo Ball Valves

Part No. 1280, 1280 A, 1280 B & 1280 C

These two piece LPG Ball Valves have their bodies forged from Brass Alloy and working parts from stainless steel. Seats and gland washers are P.T.F.E. These valves are full bore, anti-static. The lever and spindle have a dual lock system for quarter turn operation.

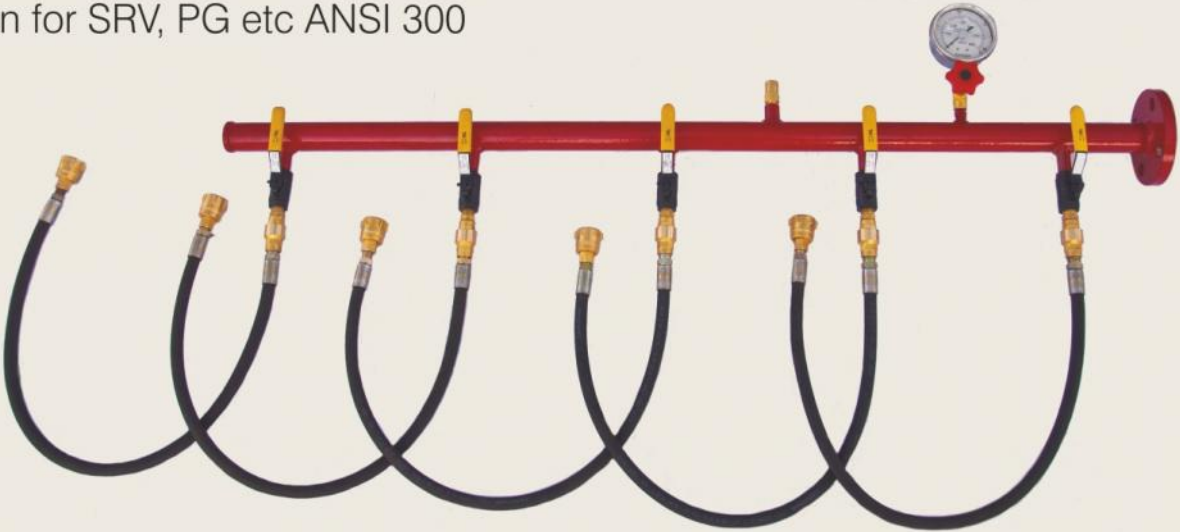


## F. Valves

(Main Cylinder Valve)  
Part No. 1260 / V5004

Used on cylinder manifold to control  
(shut off or open one side of cylinder bank)  
Inlet –  $\frac{3}{4}$ " NGT and Outlet – MECV

LOT Manifold 10 / 15 / 20 Cylinders with provision for SRV, PG etc ANSI 300



LOT Class 300 Main Valve  
Part No. 1323



Adaptor for LOT  
Part No. 1242 A - Ribbed GASMAN  
Part No. 1242 B - Knurled VEL



Pop Action Safety Relief Valve  
Part No. 1243 to 1244



Non-return Valve for LOT  
Part No. 1246 to 1248

Flow Glass

Part No. 1435/36/37



LOT Manifold Valve

Part No. 1270A



Quick Release Coupling

Part No. 1320/20A/21/21B



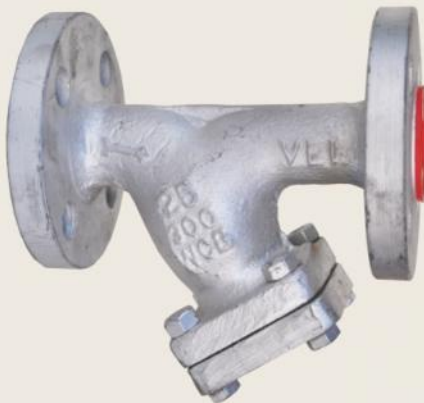
21 Kg Glycerine filled Gauge

Part No. 1402



Y-Strainer Class 300

Part No. 1249/49A



Boss Flap Type NRV

Size - 1/2" to 3" BSPF



Part No. 1429 / 31 / 32 / 32 / 34

LOT hoses

Part No. 1240/1241

Dunlop,ALFAGOMMA



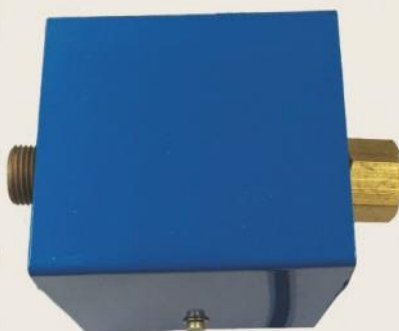
Boss type Y strainer also available in 1/2", 3/4" and 1" size



Temperature Indicator Controller  
Ignition Panel for Burner Control  
Part No. 1319



Automatic Electronic  
Changeover for Switching  
from one bank to another  
with high & low pressure  
alarm.



Electric Co<sub>2</sub> Heater 230 V

## Liquid Off-take Installations

In 19kgs, 35kgs, 47.5kgs capacities.



### Dirt Trap

Part No. 1430

#300 Class

50NB/40NB/25NB

300x450



### LPG Liquid Trap

#300 Class

50NB/40NB/25NB

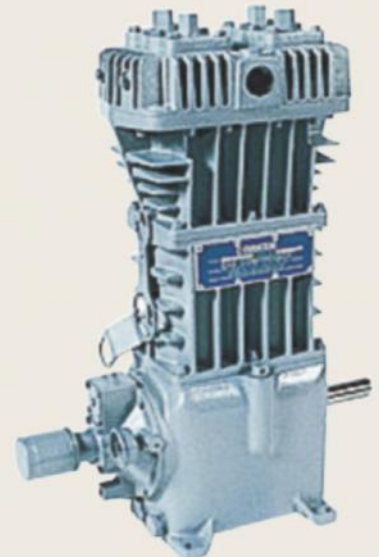
180x300

Part No. 1430 B



### LPG Pumps & Compressors

LPG PUMPS, LPG COMPRESSORS, ACCESSORIES for LPG tanker uploading, Bobtail, Autogas, Cylinder filling, Trailer loading / unloading, Industrial Process and Vapor Recovery System Application.



## Bulk LPG Fittings

Rotogauges for bulk LPG bullets, Thermostats & Heating Coils for Vaporisers, and all fitting for Decanting, Unloading Hoses, Acme Couplings and Clamps are also available. We also test and certify LPG Safety Valves, Vaporisers, Unloading Hoses & LPG Bullets as per Chief Controller of Explosives Rules.

## LPG Bulk Equipments Plus Spares

We carry out overhead & mounded storage installations for LPG in India and abroad. We also offer consultancy for setting up of bottling plants for filling LPG cylinders

### Liquid Off-take Installations

In 450 kg capacity



### Acme Nuts & Couplings



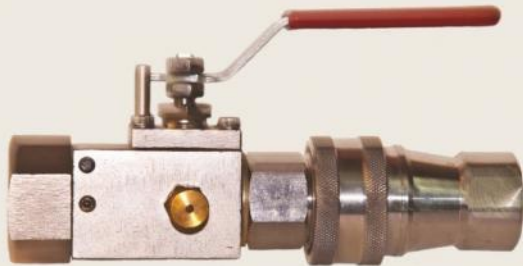
Pop action valve / Thermal relief valve



Acme Coupling

### Unloading & Decanting Hoses

Size: 4mts & 5mts length and 1 1/2" - 2" end fittings.



**Outlet fittings like actuator valves, quick release couplings, isolation valves, hoses available for liquid offtake and adaptors, quick release couplings and isolation valves for vapour offtake are available for 450 kg jumbo cylinders. For installation enquiries and fittings please send mail to [projects@punegas.com](mailto:projects@punegas.com)**



### Safety Relief Valve for Bulk Bullets



### Temperature gauge



### Rotogaugue for LPG Bullets

